

6.3 Making topics look different - by **creating Hot Links**

Description:

Clicking on a Hot Link takes you to another place in the Internet.

The Hot Link can be put on words or pictures.

Topic: 66 - 68 Weraroa Road, Le

Topic Type: Structure

Built by Mr George Kenner Douglas, the weatherboard ho facing west. The windows are of the sash type, and woodc



Weatherboard house windows are of the sa

[Click here to read wh](#)



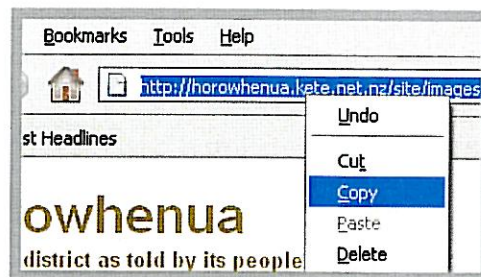
Step by Step:

- 1 Copy the URL where you want the link to go to.
- 2 Either **Create** or **Edit** the Topic in Kete.
- 3 In the text editor, **select** the text or picture that is to carry the link.
- 4 Click on the **Insert/edit link** button.
- 5 **Paste** the address into the **Link URL** field.
- 6 Click on the **Update** button.
- 7 Click on **Save** button to close the editor.
- 8 You can attach a hot link to any text or picture in the description area of the text editor.
- 9 The link URL can be to any Internet address.

More detailed explanation:

- 1 Copy the URL of the page or place where you want the link to take the visitor to - try right clicking on the URL and selecting **C**opy.

This can be done using a separate Internet window.



- 2 Either **Create** a new topic in Kete, or **Edit** an existing topic in Kete.

- 3 In the text editor, **select** the text or picture that is to carry the link.

- 4 Click on the **Insert/edit link** button.



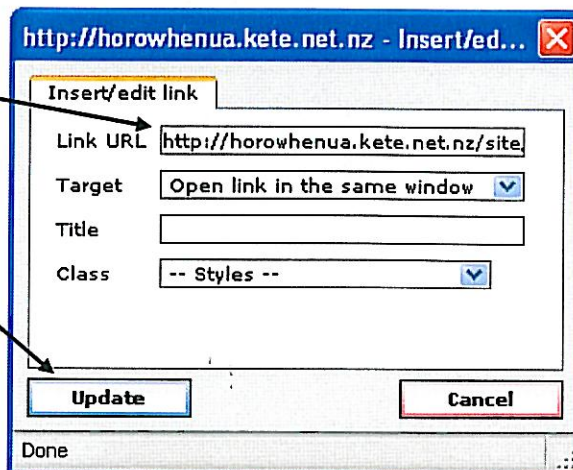
- 5 **Paste** the address into the **Link URL** field.

- 6 Click on the **Update** button.

- 7 Click on **Save** button to close the editor.

- 8 You can attach a hot link to any text or picture in the description area of the text.

- 9 The link URL can be to any Internet address - whether inside Kete or elsewhere.



Examples of Hot Links:

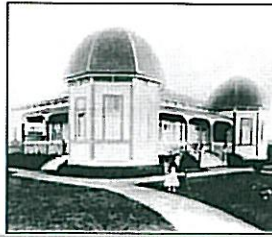
The example at right has **two hot links**:

- the picture of the house itself
and
- the underlined text
"Click here to ..."

Topic: 66 - 68 Weraroa Road, Levin.

Topic Type: Structure

Built by Mr George Kenner Douglas, the weatherboard house has two distinctive domes. There are two windows of the sash type, and wooden steps lead up to the house.



Weatherboard house with two distinctive domes. There are two windows of the sash type, and wooden steps lead up to the house.

[Click here to read what Corrie Swanwick wrote about the history of the house.](#)

This topic uses Hot Links to take the visitor to either:

- the NatureCoast web page for an area
or
- a map of the area.

Topic: Horowhenua District

Topic Type: Place

Horowhenua is situated in the North Island of New Zealand approximately 1 hour north of the capital city of Wellington.

Tags: [Horowhenua](#), [map](#), [region](#)



It stretches from the Otaki River in the south to Himitanqi in the north, from the sea to the Ranges on the east - as shown in red on the map on the left. The region has a population of approximately 100,000 people with the main settlements being:

- Levin - [click here for the NatureCoast web page on Levin](#) or [Here for a Map](#)
- Foxton - [click here for the NatureCoast web page on Foxton](#) or [Here for a Map](#)
- Foxton - [Click here for the NatureCoast web page on Foxton Beach](#) or [Here for a Map](#)
- Shannon - [click here for the NatureCoast web page on Shannon](#) or [Here for a Map](#)
- Tokomaru - [click here for the NatureCoast web page on Tokomaru](#) or [Here for a Map](#)
- Manakau - [click here for the NatureCoast web page on Manakau](#) or [Here for a Map](#)
- Ohau ... [click here for the NatureCoast web page on Ohau](#) or [Here for a Map](#)

Topic: Hungry in Oxford Street?

Topic Type: General

There is no reason to stay hungry for long in Oxford Street, Levin, with over 20 cafes, eateries, restaurants and takeaway shops in the street.

Tags: [Levin](#), [cafes](#), [eateries](#), [food](#), [restaurants](#), [dining](#), [dine out](#)

Here are some of them:

NAME	ADDRESS	PHONE
71 Oxford Street	71 Oxford Street, Levin	
The Bakery	60 Oxford Street, Levin	(06) 367 3654
Berries	Corner York and Oxford Streets	(06) 367 6300
Cafe Floor	Levin Mall, Oxford Street, Levin	(06) 368 4969
Cafe Uno	Levin Mall, Oxford Street, Levin	(06) 368 8251
Caffeine	255 Oxford Street, Levin	(06) 367 6402
Chester Noodles	225 Oxford Street, Levin	(06) 367 5276
Colb & Co.	Old Oxford and Durham Streets, Levin	(06) 360 9157
Flag Star Takeaway	70 Oxford Street, Levin	(06) 368 9952
Home Cookery	223 Oxford Street, Levin	(06) 360 2602
MD Takeaways	229 Oxford Street, Levin	(06) 367 2450
Hot Grill	33 Oxford Street, Levin	(06) 360 4724
Levin Community Club	47-61 Oxford Street, Levin	(06) 360 2571



This example combines:

- Hot Links
- with
- Tables (which are discussed in detail on Sheet 6.2)

This example has a Hot Link to TVNZ's website and the CloseUp story on the Horowhenua's solution to Beach safety.

Topic: Horowhenua leads the way in Beach Safety

Topic Type: General

TVNZ's CloseUp program ran a story about how three Horowhenua beaches have found a solution to beach safety.

Tags: [Foxton Beach](#), [Himitangi Beach](#), [waitarere beach](#)



An intensive policing and education campaign has drastically reduced beach safety incidents. Corrine Ambler sees how it works on Waitarere Beach.

[Click here to go to the weblink to watch the story.](#)